

STUDY FOR SMALL HYDROPOWER PLANTS ON BÂRZAVA RIVER, AS LOCALLY ADAPTED SOLUTION FOR INVESTMENT IN RENEWABLE ENERGY AND PUBLIC UTILITIES INFRASTRUCTURE

Goal of the project

The study is mainly concerned by the implementation of extension of the water supply and the domestic sewerage network for the area of tourist resorts of local interest Secu, Reșița municipality, construction of non-motorized pedestrian and bicycle track to the Secu resort area and providing a protective tube for the electrical cables, lighting, internet, telephony, etc., for the Secu station area.

Short description of the project

Following analysis, the project identifies two accomplishment scenarios from which the technical-economical optimum solution for the extension of the water supply and the domestic sewerage network and the construction of non-motorized track for the Secu tourist resort area.

Implementation period

2019–2020 (19 months)

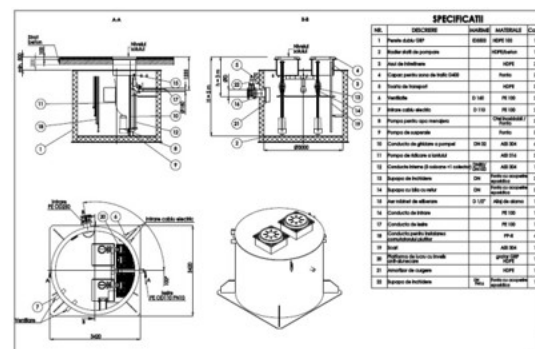
Financed through/by

Resita Municipality

Main activities



The extension of the drinking water supply network of the objective will be made of PE-HD, PE100, PN16, with De 180 mm, on a length of approximately $L = 7,469$ m. 2 tanks with the volume of $V = 200$ m³ each will be provided, a pumping station for the tank R1 and a pumping station for the tank R2.

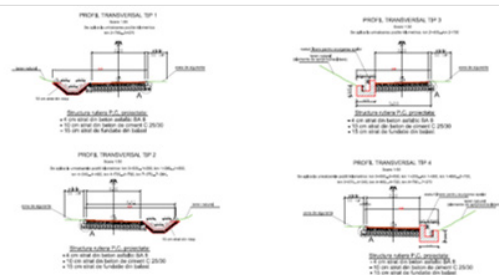
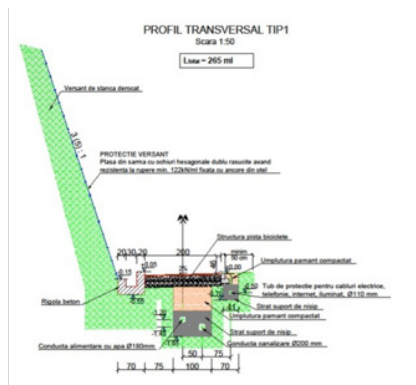


The extension of the sewerage network of the objective implies:

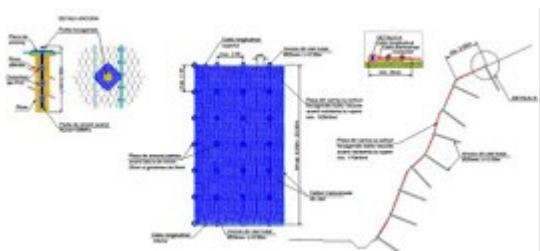
- wastewater discharge pipe from PE-HD, PE100, PN10, with De 200 x 11.9 mm in length of 3,903 m from the wastewater pumping station at the highest point on the route;

- wastewater discharge pipe from PE-HD, PE100, PN16, with 180 x 16.4 mm in length of 4,170 m from the highest point on the route to the existing manhole on Rozelor Street.

On the location of the track bikes, according to the situation plan and the transversal profile, a corrugated protection tube made of PE-HD with De 110 mm is positioned for the protection of the existing or future cables of telephony, electrical, internet, lighting, etc. The total length of the protection tube is 7,394 m.



- The projected route of the runway runs over a length of 7,394 m, on the administrative territory of Reșița municipality, Caraș-Severin county.
- It serves the inhabitants of the area as well as the tourists who generate the bicycle traffic in the area.



On the projected water-canal route, respectively the bicycle track, in the areas where the existing road is close to the slope, given the width of the bicycle track, respectively of the imposed safety zones, including gutters, demolition works are required in the slope, the total length (cumulated by sectors) being about 1,625 m.

Results

Ensuring the traffic of tourists by bicycle and the degree of comfort in the tourist resort Secu through the water and sewerage system.

Applicability and transferability of the results

Providing a water supply and sewerage system for the Secu tourist resort and the bicycle track for tourists.

Research team

Albert Titus CONSTANTIN,
Constantin FLORESCU,
Ion MIREL,
Marin MARIN,
Ioan ȘUMĂLAN,
Ciprian COSTESCU,
Cristian STĂNILOIU,
Serban –Vlad NICOARA,
Alina POPESCU – BUSAN,
Mircea VIȘESCU, Marius ADAM,
Dan PÎRVULESCU,
Ioana-Alina CREȚAN,
Liliana COTOARBĂ

Contact information

Assist. Prof. Albert Titus CONSTANTIN, PhD
Faculty of Civil Engineering
Department of Hydrotechnical Engineering
Address: 1A George Enescu Street, 300022, Timișoara, Romania
Phone: (+40) 256 404091
Mobile: +40 720 059 371
E-mail: albert.constantin@upt.ro
<https://www.ct.upt.ro/en/hidro/index.htm>